

From the Chair

Dear Members and Friends of FWCS,

On behalf of the Florida West Coast Section I would personally like to thank my Board of Directors for all their support and encouragement in helping the association strive to be better and more visible.

I also do not want to miss thanking our members for their support in continuing to come to our tours and show their support through sponsorship and volunteering their time in an endless effort of making the whole Section more visible and a pleasure to be a part of.

Hope to see you all on the next tour!

A job well done to all Engineers!

Elizabeth I. Vincourek
(727)939-9092
evincourek@yahoo.com

FWCS-ASME

Outstanding Section Award for FWCS

On April 9-10, 2011, Southeast District F hosted the District Section Seminar in the beautiful new Marriot Gateway hotel at the World busiest airport Hartsfield-Jackson, Atlanta, GA. This two day seminar gathered leaders from all of the Southeast sections.

Two fifty minutes technical presentations were web cast live from the seminar and were introduced as a possibility to earn PDH hours.

The first day covered several interesting programs, including the state of the district and ASME staff support, section programs, activities and websites, and honors and awards programs. Section representatives reported their section's activities and shared their section's best practices and challenges.

On the second day, the focus was on how to improve the sections operation, interaction with students, reaching students and early career engineers, succession planning, social networking, District finances and conducting successful PDH classes.

John Mulvihill, our District F leader, presented several awards including District Leadership Awards, Dedicated Service Award and Outstanding Section Awards.

FWCS of ASME was awarded an Outstanding Section Award certificate that included a \$100 monetary award!

A Tour of the new Marriot Gateway hotel and its mechanical rooms, planned for LEED certification, added to the overall two day unique experience.



INSIDE THIS ISSUE

- 1 **Local Section News**
- 4 **ASME Statement on Japan**
- 4 **Fresno Scraper Recognized as Landmark**
- 5 **North Carolina Railroad Facility Honored**
- 6 **ASME 2011 Annual Meeting**
- 7 **Member Savvy**

Meet John Mulvihill - 2011 Engineer of the Year



1. Being a successful Project Director in the City of Oldsmar, an ASME District F Leader and ASME Director, how much effort is needed to exceed excellence in all fields?
“Although it takes a lot of effort, it is a big pleasure. I have great support from my wife. Also, my boss at the City of Oldsmar supports my participation in the professional society.”

2. What is the most interesting thing about you that you would like our readers to learn?
“I am enjoying what I am doing, both my job as an engineer, volunteering in the American Society of Mechanical Engineers and interacting with the students.”

3. What would you consider as your biggest professional achievement that you are proud of?
“Making Things Happen! I am field operations person. Both with 23 years in the local Government and 20 years in the military, I've been a problem solver! It is always a rewarding experience and a pleasure to see things happen!”

4. How did ASME influence your career?
“ASME has been an important part of my career. ASME did not influence my career but had helped to enhance my communication and leadership skills. I have always been a communicator! Military had influenced my career.”

5. What is "A Good Leader" and your example of good leadership?
“A Good Leader is the person that listens to the people that leads, evaluates their opinions, and makes a firm decisive decision. I respect General Colin Powell. Back in 1986 -1987, in Frankfurt Germany, I was a staff engineer in the V-th U.S. Corps (5th U.S. Corps), General Colin Powell was a Commander at the V-th US Corps (5th U.S. Corps).”

6. What do you believe to be the biggest challenge facing our World today?
“The World financial crisis and economy is far more severe that the World energy crisis. I think, the economy is the biggest problem and energy policy is the second.”

7. What makes you laugh?
“I am very positive person. I am always looking at the good side of the things and positive side in people.”

8. Do you find time to read and what do you read?
“I like to read technical subjects, technical magazines and Mechanical Engineering magazines. I also enjoy reading leadership books as a great source of information.”

9. What message would you give to your peers and young engineers?
“It is a good time to be an engineer. Looking at the World challenges today, all are mechanical engineering challenges that consider all sources of energy, power, nuclear energy, building industry, water supply, renewable resources. Mechanical engineering is a diversified profession. In today's Global economy we are facing Global challenges. I would focus on ASME as a professional development organization, stay on that course, take advantage of the opportunities and be prepare to move globally.”



FWCS-ASME

Call for Volunteers FY2011-2012

FWCS is accepting volunteers for officer positions for upcoming fiscal year 2011-2012.

Should you be interested in helping your local chapter and gaining more leadership or communication skills, nominate your self for one of the positions in the local chapter. Write your name and the officer's position you would be interested in pursuing to the newsletter chair at: krstanoskim2@asme.org or any of the FWCS officers or committee chairs.

Volunteer in your local chapter and experience the of joy being part of the FWCS of ASME.

*“Always do your best.
What you plant now, you will harvest later”*

*– Og Mandino (1923-1996)
American Author*

Congratulations to the ASME@USF Electrathon Team

The Emerald Coast Pensacola Electrathon Classic Race was held on April 16th, 2011 in Pensacola, FL. Electrathon Team #133 from ASME@USF won first place in the college division, and third place in the overall competition.

ASME@USF Emerald Team was comprised of nine members. Congratulations to the ASME@USF Electrathon Team for their success as well as to John Camacho, Computer Science Major and Honors College Student, for winning 1st in the division during the first race, and Alexandra Wallmueller, Mechanical Engineering Major and Honors College student, for being first in the division during the second race and third overall. Alexandra was also recorded as the fastest car on the track that day. She was clocked via radar during practice at 43 MPH! The pit crew was staffed by USF Mechanical Engineering students Andrew Miller, Adam Zimandy, David Botta, Abbi Lambert, Drew Carpenter, Nyssa Masters and Sean Motta.



ASME Statement on Events in Japan



NEW YORK, Mar. 17, 2011 — On behalf of our members, volunteers and staff worldwide, ASME expresses its heartfelt sympathies and concerns to all those affected by the historic earthquake and tsunami causing major widespread damage in Japan, and the

unfolding events at the Fukushima Daiichi nuclear power station. This disaster is truly unprecedented in its scope and nature, particularly to Japan's transportation and energy infrastructure, including nuclear power, thermal power, hydro power, electric transmission, oil refining and beyond. ASME will be monitoring events as they continue to emerge and will be collaborating with our colleagues in Japan and elsewhere to understand the dimensions of these tragic events. We are deeply saddened by the loss of life and the scale of destruction, and we want to acknowledge the valiant and selfless efforts being made by our engineering colleagues in Japan to ensure public safety, along with the many other workers and officials who are heroically responding to this tragedy. Our thoughts and prayers are with the Japanese people at this difficult time.

Turbo Expo 2011 Heading to Vancouver in June

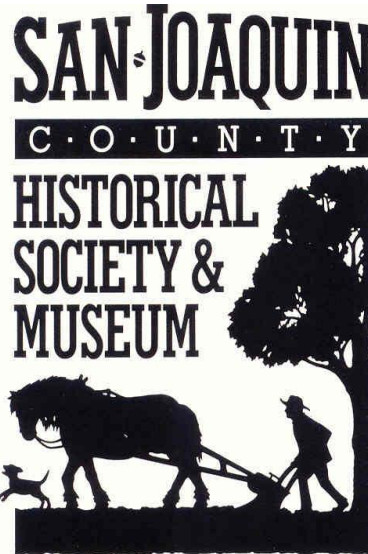


Thousands of turbomachinery professionals converge in Vancouver from June 6 through the 10th for **the ASME Turbo Expo**, the year's most commanding gathering of business leaders, technology contributors and authorities in the field of turbines. It is an ideal occasion to gather essential marketplace insights, learn about pivotal achievements and connect with colleagues from around the world.

See <http://www.asmeconferences.org/te2011/> to download or view the Advance Program with complete conference details. Post a photo of yourself wearing your ASME Turbo Expo shirt on the International Gas Turbine Institute's Facebook page for a chance to win a random drawing for a complimentary 3-day Turbo Expo Technical Conference badge for Vancouver. The drawing will be held in April. If you do not have a shirt, you can purchase one via <http://igti.asme.org/Events/>.

ASME Turbo Expo 2011 Training Courses, June 4-5, 2011 - For more information, see: <http://www.asmeconferences.org/TE2011/ShortCourses.cfm>

Fresno Scraper Recognized as a Mechanical Engineering Landmark



The horse-drawn Fresno Scraper, a ditch digging apparatus that contributed to the expansion of American farming at the turn of the century and also played a role in the massive earthmoving work for the construction of the Panama Canal, was re-designated an ASME Historic Mechanical Engineering Landmark at a special ceremony on March 26, in Lodi, Calif.

At a ceremony at the San Joaquin County Historical Museum, ASME presented a bronze plaque to the museum in recognition of the mechanical attributes of the Fresno Scraper, which revolutionized earthmoving equipment and enabled agricultural irrigation in California's San Joaquin Valley.



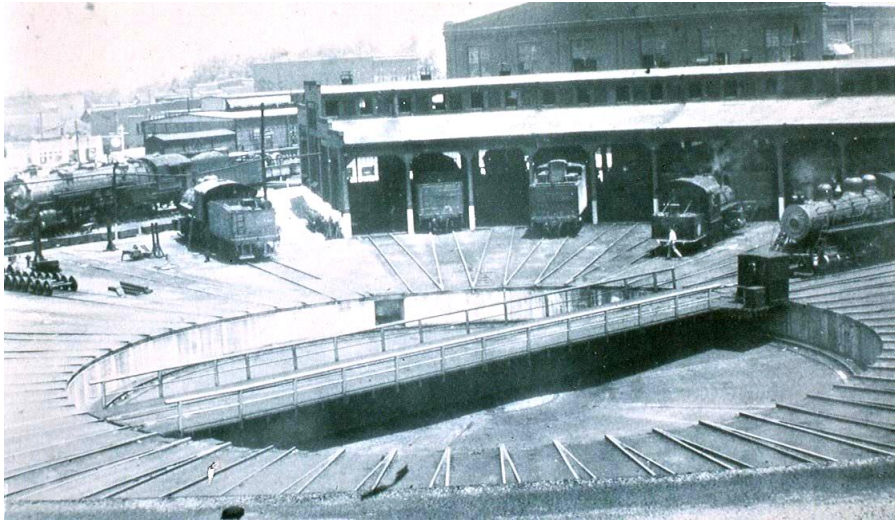
The Fresno Scraper was developed in the 1880s in the San Joaquin Valley. Manufacturing began in the mid-1880s by James Porteous's Fresno Agricultural

Works—hence its name—with additional production by Stockton's Holt Manufacturing Company from 1902 through at least 1915.

Fresno Scrapers were sold throughout the West and when word spread of their efficiency, reliability, and ease of operation, they were shipped throughout the United States and eventually around the world. Fresno Scrapers played a vital role in the construction of the Panama Canal and early levees in the Sacramento-San Joaquin Delta. They continued to be widely used after the advent of the tractor in the 1910s and 1920s, often with mechanical or hydraulic controls. Although motorized graders and advanced scrapers replaced them on large earthmoving jobs in the 1930s, farmers continued to use Fresno Scrapers for many years.

The ASME plaque states: "The Fresno Scraper established the basis for the modern earthmoving scraper."

Railroad Facility in North Carolina Receives Honor from ASME



The Spencer Shops Roundhouse and Turntable on the site of the North Carolina Transportation Museum, which the Southern Railway built in 1924 to repair steam locomotives, was named an ASME Historic Mechanical Engineering Landmark at a special ceremony on March 19 in Spencer.

At the North Carolina Transportation Museum, the New York-based American Society of Mechanical Engineers presented a bronze plaque to the museum in recognition of the contribution of the Spencer facility to the progress of American railroading and evolution of mechanical engineering.

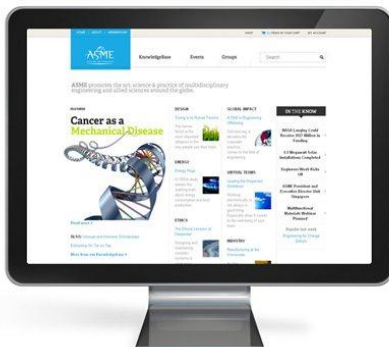
The Spencer facility is one of the few early 20th century railroad locomotive repair shops in the United States. Consisting of a massive erecting shop, 100-foot turntable and roundhouse equipped with 37 individual stalls, Spencer served as the main shop on the Southern Railway's Eastern Lines, employing more than 3,000 people during peak periods.

The turntable at Spencer sits on a circular rail set in the floor of a concrete pit. Two 25-horsepower electric motors rotated the system 360 degrees on a center spindle, lining up the locomotive with straight sections of track leading into the stalls of the roundhouse, where maintenance and repairs ranging from running gear adjustments to brake work were performed. A sprawling rail yard, the Spencer facility also included a machine shop where train parts were forged, as well as various administrative and office buildings.

The Spencer Shops Roundhouse and Turntable served the Southern Railway during the nation's heyday of the steam-powered locomotive, and was modified and expanded from 1948 to 1950 to accommodate the company's investment in diesel engines. The complex was donated to the State of North Carolina in 1979, at which time the North Carolina Department of Cultural Resources proposed a restoration project including the creation of a museum to focus on the state's rich transportation history.

The roundhouse and turntable were refurbished and opened to the public in 1996, allowing local railroad history to continue into the future.

Revamped ASME.org Shows the Society's New Face



The recent debut of **the new ASME.org website** marks a major milestone for the Society. In a tight 13-month timeframe, the Core Web Team successfully initiated the launch of a completely revised, modern ASME.org website on Friday, March 18. What was once a Society-centered, inward-focused website is now an engineering-centric, outward focused site — one with new and frequently updated features, aggregated news links and a clean, reader-friendly design.

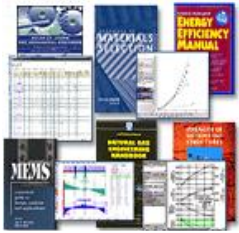
“This represents a new direction for the way the Society presents itself to and engages with a wide range of audiences,” says ASME Executive Director Tom Loughlin. “With engineers now having access to a range of competing digital resources, our goal is to make ASME.org the online center for engineering conversations.”

Thanking the Core Team, Editorial and the I.T. department, Loughlin said, “We want the site to become a destination, attracting new visitors who return frequently for new perspectives, insights and news ... as well as to participate in our mission-driven activities and buy products and services.”

Acknowledging that the launch is only the first step, Loughlin said, “The Team worked aggressively to make critical changes and as many of the simple fixes as possible prior to launch. Other structural issues can now be considered in post-launch alteration or in follow-up phases on Community and E-Commerce. Growing, evolving and maintaining the site will require much hard work, collaboration and communication across the Society in the months ahead.” While visiting the new site, you are invited to submit any comments and feedback to: stafffeedback@asme.org.

ASME e-Library Webinar Series

Spring is finally here, which means that the **e-Library webinars** are back and better than ever!



One of the most useful benefits of ASME membership is a powerful application used by engineers at Fortune 500 companies and hundreds of leading engineering schools around the world.

The **ASME e-Library** is powered by Knovel, which combines unparalleled access to technical information with powerful analytical and search tools to deliver answers you can trust.

ASME and Knovel are providing you with a **FREE** webinar to help you get acquainted with the new and improved features.

For a deep overview, see <https://www2.gotomeeting.com/register/933242058> to register for a 45 - 50 minute live demo on Tuesday, April 12th @ 2:00 PM (Eastern).

Lead Today! Shape Tomorrow! Run for ASME Office!

The 2011 Nominating Committee is seeking highly qualified leaders to become ASME Society Officers.

Selection for the open positions below will take place at the Annual Meeting in June 2011.

President

Board of Governors – 3 positions to fill

Vice Presidents – 1 position for each Unit:

VP Centers – Education

VP Standards and Certification – Safety Codes and Standards

VP Standards and Certification – Conformity Assessment

VP Institutes – International Gas Turbine Institute

VP Knowledge and Community – Programs and Activities

VP Knowledge and Community – Technical Communities

VP Strategic Management – Government Relations

For more information contact RuthAnn Bigley at bigleyr@asme.org



The **ASME 2011 Annual Meeting** will be held at the Intercontinental Dallas in Addison, Texas. This conference provides a venue for ASME members and other engineering professionals to assemble for personal and professional growth and to learn about trends and developments affecting the future of the profession. The Annual Meeting begins on **Saturday, June 11, 2011** with the Innovation Showcase.

On Sunday, prior to the opening reception, a member assembly will feature presentations and discussion on how ASME's strategic priorities—energy, engineering workforce development, and global impact—are being put into action through these dynamic, interrelated initiatives: The launches of a redesigned ASME.org and Engineering for Change, and the commencement of year-long preparations for Engineers Week 2012, which ASME co-chairs with Battelle Memorial Institute.

Another key event for this year's conference is a high-level discussion of energy policy, a strategic priority for ASME. This plenary session, "Carbon Reduction in our Energy Intensive Future," focuses on carbon capture and sequestration, opportunity/cost of emissions reduction and policy/legislation. Panel participants include energy experts from government and industry who will discuss energy technologies, energy challenges and measurements of success.

For information on all the events, such as the Innovation Showcase and the Ralph Coates Roe Medal Lecture and Luncheon, see <http://events.asme.org/AnnualMeeting11/>.



Member Savvy

The Value of ASME Membership



Benefit Spotlight: New Career Podcasts!

I am proud to be a Mechanical Engineer because:

- ✓ *It gives me the fundamental tools to pursue many diverse engineering projects.*
- ✓ *It is a discipline for having a rational approach to problem solving, design, testing, and analysis.*
- ✓ *It provides a basis for having the confidence to assess technical issues, to communicate, and to guide others.*

I am proud to be an ASME Member because:

- ✓ *It gives visibility to our field of trade.*
- ✓ *It provides leadership in the codes and standards.*
- ✓ *It instills a professional ethic in its members.*

Ralph Bryant, P.E. ~ ASME Member since 1977

Dear Members,

I love audio books and podcasts! Whether I'm riding the train on my daily commute into New York City or taking a drive through the country on weekends, I'm always listening to something interesting on my iPod. Over the years, I've spoken with many mechanical engineers. I consistently hear that our members are always looking for ways to expand their knowledge and increase their expertise. That's why I'm excited to announce that ASME has partnered with two of the leading experts in career management to bring you a brand new series of career focused podcasts on www.asme.org.

Podcast Series #1

Solving technical problems on the job is vital but equally important are the complementary soft skills that will enable you to be more effective in work and in life. Using down-to-earth examples, Carl Selinger, author of *Stuff You Don't Learn in Engineering School: Skills for Success in the Real World*, has put together a series of podcasts aimed at helping you succeed in your current job. Topics include decision-making, setting priorities and time management, facilitating meetings, team collaboration, leadership skills and stress management.

Podcast Series #2

Searching for a new job in a post-recession world is a challenge that few are prepared for. Presented by Wall Street Journal columnist and author Peter Weddle, this podcast series offers practical, yet innovative approaches to using online tactics for a professional job search. Focused on mechanical engineers, this series covers everything from how to position yourself as a high value candidate to strategies for effectively building your own online brand.

Whether you're looking to succeed in your current position or just want to explore new and exciting career opportunities, ASME members now have access to entertaining yet informative podcasts that can change your professional life, for the better! Please visit <http://jobboard.asme.org/website/84548/audio.cfm> and click on the podcast that interests you. Start enhancing your engineering career today!

As always, **thank you** for your continued loyalty to ASME and your support of the engineering profession. Please feel free to contact me at membership@asme.org and let me know how we can further enhance your experience. Remember, a successful career takes talent, intelligence and ASME Membership!

Warmest regards,

Mike

Michael Kreisberg
Director, ASME Membership Development

We are inviting you to visit our web site at: www.asmefwcs.org and to submit any comments and feedback on events in which you participated.

In March we have tried a different approach, and scheduled four events with different topics.

Thank you to all for your participation and attending these events!

We had a chance to meet many interesting members and friends of FWCS.

Please share your thoughts on the particular event you attended and tell us what you liked most or something you think needs improvement.

We welcome your feedback, ideas and suggestions for Tours or future events.

Stay tuned and don't miss the upcoming May Tour and Events!

Looking forward to see you all in May!

FWCS-ASME Officers and Committee chairs

Chair: Elizabeth Vincourek e-mail: evincourek@yahoo.com	Vice Chair: Steve Elting e-mail: steve@eltingmechanical.com	Vice Chair Programs Magdalena Krstanoski e-mail: krstanoskim2@asme.org	Treasurer: Matthew Montgomery e-mail: matt.montgomery@mcst.com
Secretary: Paul Stevenson e-mail: stevensonp1@asme.org	Director: John Mulvihill e-mail: mulvihillj@asme.org	Director: Bob Andrew e-mail: andrewr@asme.org	Director: Billy Adkins e-mail: billy_adkins_57@yahoo.com
Immediate Past Chair / Director: Pete Grotsky e-mail: grotskyp2@asme.org	Webmaster: Dr.Autar Kaw e-mail: kaw@eng.usf.edu	TBEWB Chairs: Elizabeth Vincourek / Pete Grotsky e-mail: evincourek@yahoo.com / grotskyp2@asme.org	Newsletter Committee Chair: Magdalena Krstanoski e-mail: krstanoskim2@asme.org